



SIKES CATALOGUE

www.sikes-elec.com www.sikes-elec.cn

西凯士·电阻产品选型手册
Resistors Selection Brochure

RESISTOR
电阻



Filter
滤波器

Transformer
变压器

Regenerative
drive
回馈装置

Choke
电抗器

Load bank
负载

Dynamic
Braking Unit
制动单元

SIKES ELECTRIC (HK) CO., LTD.
西凯士电气(香港)有限公司

CONTENTS 目录

- 03 Wirewound Resistor**
波纹电阻器 (RXG20)
- 05 Aluminum Housed Resistor**
铝壳电阻器 (RXLG)
- 08 Aluminum Resistor Multi-Unit**
铝壳多连体电阻器 (ARXU)
- 09 Braking Resistor Box**
制动电阻箱 (BRB)
- 11 Power Resistor Cabinet**
功率电阻柜 (PRU)
- 13 Stainless Steel Resistor Dedicated For Crane,
Tower crane, Port crane**
起重机、塔机、港吊专用不锈钢电阻
- 14 Power Aluminum Encased Resistors
(Injection Type)**
功率铝壳电阻器 (注塑型)
- 16 Oval wirewound resistor flame-restarded**
功率型阻燃扁式被漆线绕电阻器 (RXB23)

SIKES ELECTRIC(HK) CO., LTD.

西凯士电气(香港)有限公司

SHENZHEN SIKES ELECTRIC CO., LTD.

深圳市西凯士电气有限公司

Add.: Bldg. B, Huayuan industrial park, Phoenix,
Fuyong ST 518103, Baoan district, Shenzhen, Guangdong, China
地址: 中国·广东深圳市宝安区福永街道凤凰华源工业区B栋

Tel: 0086-755-33859592/33859590

Fax: 0086-755-33859590-810

Email: sikes@sikes-elec.com

www.sikes-elec.com www.sikes-elec.cn

E-commerce Platform: <http://sikes.en.alibaba.com>

Products listed in the catalogue are our standard products, the parameters are for reference only. Please contact our sales department if you have any questions. We will not inform you if the information of the products are changed.

本产品目录中产品均为我司标准品, 所示参数仅供参考, 选型时或需定制产品请咨询我司业务。产品数据如有更新, 不再另行通知。

Wirewound Resistor 波纹电阻器

Product Profile 产品简述

Two terminal extensions are fixed on both ends of a ceramic tube on whose surface winds wave-shaped alloy resistance wire and a high temperature resistant and fireproof coating are applied. The ceramic tube can function as resistance wire skeleton and heat radiator as well. This product can be customized to special needs of customers and applicable to simulation load test, equipment discharge, automated control and inverter's energy loss brake.

在圆柱型的陶瓷管上固定了两个引出端子，瓷管表面上缠绕了扁带波浪形状的合金电阻丝，并在其表面涂覆一层具有阻燃，耐高温特性的涂层。陶瓷管作为电阻丝骨架的同时，又具有散热器的功效。本品可按照客户的要求定制。本品适用于模拟负荷实验，设备放电，自动控制，变频器能耗制动等。



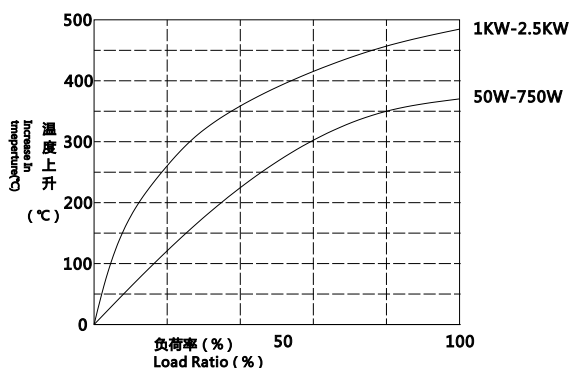
Product Parameters

- Power Range: 50W~15000W
- Voltage Range: <1.2KV
- Resistance Range: 1Ω~10KΩ
- Dielectric Strength: AC3KV 50Hz/5S
- IP Protection: IP00
- Element Material: OCr25Al5
- Advantage: High Voltage Application
- Disadvantage: Less Vibration

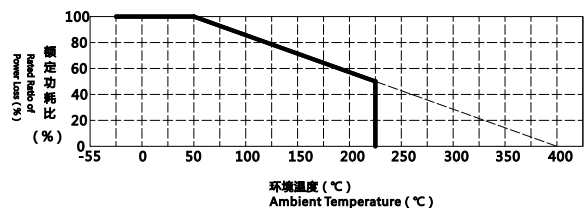
产品参数

- 额定功率范围：50W~15000W
- 工作电压范围：<1.2KV
- 额定阻值范围：1Ω~10KΩ
- 耐压范围：AC3KV 50Hz/5S
- IP等级：IP00
- 载流体材料：OCr25Al5
- 优势：可做高电压等级
- 劣势：抗震性较差

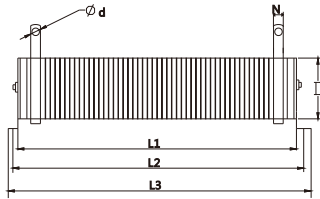
Surface Temperature Rise 表面温升



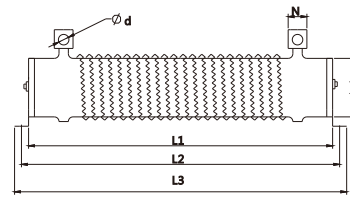
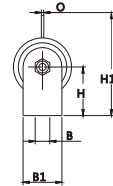
Derating Curve 降额曲线



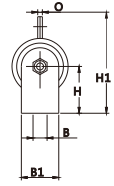
Product Size 产品尺寸图



Picture A



Picture B



Selection Table 选型表

Type 规格	Rated Power 额定功率 (W)	Picture NO. 图号	Dimension 外形尺寸 (mm)										Weight 重量 (KG)	Resistance Range 阻值范围 (Ω)	
			L1 (±2)	L2 (±5)	L3 (±3)	D (±2)	B	B1	H	H1 (±3)	N	Φd			O
RXG20	50	A	102	124	146	28	6.5	28	28	62	9.5	4.5	1.2	0.2	1Ω-10KΩ
RXG20	60		102	124	146	28	6.5	28	28	62	9.5	4.5	1.2	0.2	1Ω-10KΩ
RXG20	80		152	174	196	28	6.5	28	28	62	9.5	4.5	1.2	0.2	1Ω-10KΩ
RXG20	100		182	204	226	28	6.5	28	28	62	9.5	4.5	1.2	0.2	1Ω-10KΩ
RXG20	120		182	204	226	28	6.5	28	28	62	9.5	4.5	1.2	0.2	1Ω-10KΩ
RXG20	150		215	235	241	28	6.5	28	28	62	9.5	5.5	2.0	0.4	1Ω-10KΩ
RXG20	200		267	297	241	28	6.5	28	28	62	9.5	5.5	2.0	0.4	1Ω-10KΩ
RXG20	300	B	260	290	328	40	8.0	40	45	90	10	4	1.2	1.2	1Ω-10KΩ
RXG20	400		300	330	360	40	8.0	40	45	90	10	4	1.2	1.3	1Ω-10KΩ
RXG20	500		300	330	360	50	8.0	50	45	100	10	4	1.2	1.3	1Ω-10KΩ
RXG20	600		330	360	390	50	8.0	50	45	100	10	4	1.2	1.3	1Ω-10KΩ
RXG20	800		300	345	365	60	8.0	60	60	125	15	6.5	2.0	1.4	1Ω-10KΩ
RXG20	1000		300	345	365	60	8.0	60	60	125	15	6.5	2.0	1.4	5Ω-10KΩ
RXG20	1200		300	345	365	60	8.0	60	60	125	15	6.5	2.0	1.4	5Ω-10KΩ
RXG20	1500		420	465	485	60	8.0	60	60	125	15	6.5	2.0	1.7	5Ω-10KΩ
RXG20	2000		420	465	485	60	8.0	60	60	125	15	6.5	2.0	2.3	5Ω-10KΩ
RXG20	2500		420	465	485	60	8.0	60	60	125	15	6.5	2.0	2.5	5Ω-10KΩ
RXG20	3000		420	465	485	70	8.0	70	65	135	15	8.0	2.0	2.8	5Ω-10KΩ
RXG20	3500		510	550	570	70	8.0	70	65	135	15	8.0	2.0	2.8	5Ω-1kΩ
RXG20	4000		505	570	600	100	8.0	100	85	180	15	8.0	2.0	4.5	5Ω-1kΩ
RXG20	5000		505	570	600	100	8.0	100	85	180	15	8.0	2.0	4.5	5Ω-1kΩ
RXG20	6000		505	570	600	100	8.0	100	85	180	15	8.0	2.0	4.5	5Ω-1kΩ
RXG20	7000	700	745	790	100	8.0	100	85	180	15	8.0	2.0	16.0	5Ω-1kΩ	
RXG20	8000	700	745	790	100	8.0	100	85	180	15	8.0	2.0	16.0	5Ω-1kΩ	
RXG20	9000	720	755	795	150	8.0	150	100	245	18	8.0	2.0	16.0	5Ω-1kΩ	
RXG20	10000	720	755	795	150	8.0	150	100	245	18	8.0	2.0	17.0	5Ω-1kΩ	
RXG20	12000	720	755	795	150	8.0	150	100	245	18	8.0	2.0	17.0	5Ω-1kΩ	
RXG20	15000	720	755	795	150	8.0	150	100	245	18	8.0	2.0	17.0	5Ω-1kΩ	

Note: ROHS request should be noted in order.

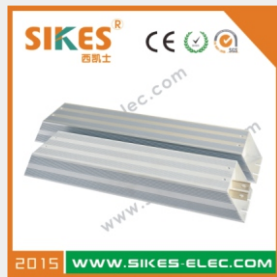
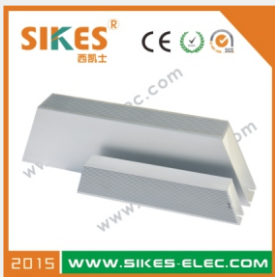
备注：ROHS 规格产品需在定单中描述（其他技术参数要求，请垂询我公司业务）

Aluminum Housed Resistor 铝壳电阻

Product Profile 产品简述

RXLG series resistor is superior to conventional ceramic-skeleton resistor in terms of weatherproof, oscillation-resistant and safety and is widely applied to electrical circuits that has high adaptability to bad ambient, such as power supply, inverter and servo system, and has high adaptability to bad ambient operating conditions. It can be easily fitted in an airtight manner and additional heat radiator can be fixed to it in an easy way. With elegant appearance, it is an ideal component that is perfectly compatible with power and electronic.

RXLG系列电阻器其耐气候性，耐振动，安全性，优于传统瓷骨架电阻器。广泛应用于电源，变频器，伺服系统等高要求的电气回路中，并能够用于恶劣的工控环境。易紧密安装，易附加散热器，外形美观，是电力电子理想的配套产品。



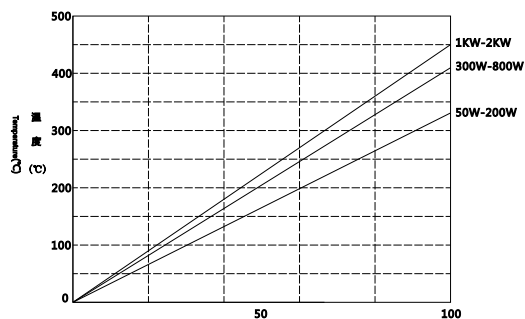
Product Parameterse

- Power Range: 60W~5000W
- Voltage Range: <1.2KV
- Resistance Range: 1Ω~10KΩ
- Dielectirc Strength: AC3KV 50Hz/5S
- IP Protection: IP00/IP33
- Vibration: 1.5g
- Temperature Coefficient: ≤400ppm/°C
- Element Material: OCr25Al5
- Advantage for Cruel enbironment
- Disadvantage: low operating voltage

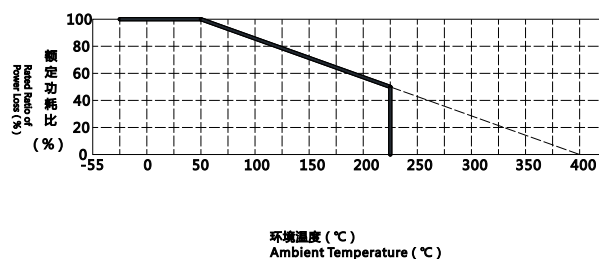
产品参数

- 额定功率范围：60W~5000W
- 工作电压范围：<1.2KV
- 额定阻值范围：1Ω~10KΩ
- 耐压范围：AC3KV 50Hz/5S
- IP等级：IP00 /Ip33/IP55/IP65
- 振动：1.5g
- 温漂范围：≤400ppm/°C
- 载流体材料：OCr25Al5
- 优势:较恶劣工作环境
- 劣势：工作电压不是很高

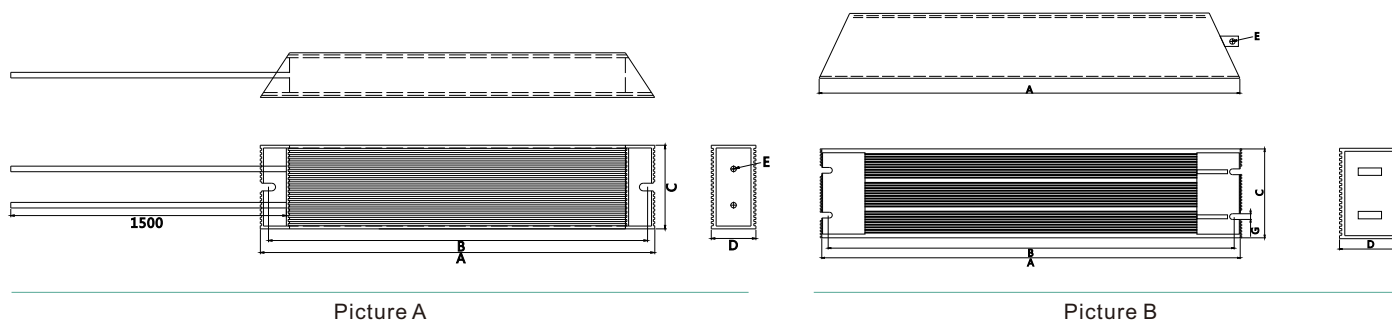
Surface Temperature Rise 表面温升



Derating Curve 降额曲线



Product Size 产品尺寸图



Mechanical And Electrical Properties 电气、机械特性

Property 特性	Inspection method 检查方法	Requirement 性能要求	Test method 试验标准
Constant Damp-heat 稳态湿热	Temperature 40°C, RH90% 96h 40°C 相对湿度 96h	$R \leq (5\% \pm 0.05\Omega)$	GB5729.2.24
Temperature change 温度快速变化	-55°C to +55°C, 3 Circles -55°C +55°C 3次循环	$R \leq (2\% \pm 0.05\Omega)$	GB5729.4.19
Transient Overload 短时过负荷	10 Time Pr 5S 10倍Pr 5S	No visible destruction 无可见损伤 $R \leq \pm(1\% \pm 0.05\Omega)$	GB5729.4.13
Insulated Resistance 绝缘电阻	DC 100V	$R \geq 100M\Omega$	GB5729.4.6
Voltage Resistibility 耐电压	AC3000V 50Hz 5S	Free of breakage or flying arc 无击穿或飞弧	GB5729.4.7
Life 负荷寿命	25°C Ur 1000h	$R \leq 20\%$	/
Terminal Strength 端子强度	45N 30S	Free of visible destruction 无可见损伤 $R \leq \pm(1\% \pm 0.05\Omega)$	GB5729.4.16
Vibration Resistibility 耐振性	f:5-200HZ a=1g X.Y.Z 各2h	Free of visible destruction 无可见损伤 $R \leq \pm(1\% \pm 0.05\Omega)$	GB5729.4.22

Aluminum Housed Resistor 铝壳电阻

Selection Table 选型表

Type 规格	Rated Power 功率 (W)	Picture NO. 图号	Dimension 外形尺寸 (mm)							Cable 配线 (mm)	Lead length 引线长度 (mm)	Terminal 接线端子	Weight 重量 (KG)	Resistance Range 阻值范围 (Ω)	Commection 出线方式
			A	B	C	D	E	F	G						
RXLG	60	A	110	95	40	20	5	/	/	1.5	300	2-5S	0.19	1Ω-10KΩ	Cable 引线
RXLG	80		110	95	40	20	5	/	/	1.5	300	2-5S	0.19	1Ω-10KΩ	
RXLG	100		140	125	40	20	5	/	/	1.5	300	2-5S	0.19	1Ω-10KΩ	
RXLG	120		140	125	40	20	5	/	/	1.5	300	2-5S	0.21	1Ω-10KΩ	
RXLG	150		180	165	40	20	5	/	/	1.5	300	2-5S	0.24	1Ω-10KΩ	
RXLG	200		170	160	60	30	5	/	/	1.5	300	2-5S	0.5	1Ω-10KΩ	
RXLG	300		220	210	60	30	5	/	/	1.5	300	2-5S	0.5	1Ω-10KΩ	
RXLG	400		220	210	60	30	5	/	/	1.5	300	2-5S	0.53	1Ω-10KΩ	
RXLG	500		240	225	60	30	5	/	/	1.5	300	2-5S	0.78	1Ω-10KΩ	
RXLG	600		240	225	60	30	5	/	/	2.5	300	2-5S	0.78	1Ω-10KΩ	
RXLG	800		340	325	60	30	5	/	/	2.5	300	2-5S	0.96	1Ω-10KΩ	
RXLG	1000		400	390	60	30	5	/	/	2.5	300	2-5S	1.35	5Ω-10KΩ	
RXLG	1200		400	390	60	30	5	/	/	2.5	300	2-5S	3	5Ω-10KΩ	
RXLG	1500		400	390	85	55	5	30	5.5	Copper	/	M6	3	5Ω-10KΩ	
RXLG	2000	400	390	85	55	5	30	5.5	Copper	/	M6	3	5Ω-10KΩ		
RXLG	2500	400	390	85	55	5	30	5.5	Copper	/	M6	3	5Ω-10KΩ		
RXLG	3000	450	440	85	55	5	30	5.5	Copper	/	M6	4.2	5Ω-10KΩ		
RXLG	3500	450	440	85	55	5	30	5.5	Copper	/	M6	4.2	5Ω-10KΩ		
RXLG	4000	550	540	85	55	5	30	5.5	Copper	/	M6	5	5Ω-10KΩ		
RXLG	5000	650	640	85	55	5	30	5.5	Copper	/	M6	5.5	5Ω-10KΩ		

Note: ROHS request should be noted in order.

备注：ROHS 规格产品需在定单中描述（其他技术参数要求，请垂询我公司业务）

Aluminum Resistor Multi-Unit 多连体铝壳电阻

Product Profile 产品简述

ARXU series Resistor are adding stainless plate shields and stands at the tow ends of traditional Aluminum Enclosure Resistors in order to seal resistor properly, so the International Protection could reach Ip54.

ARXU系列电阻器在传统铝壳电阻器两端加装不锈钢挡片，进行密封，并在两端加装支架对薄弱部位进行保护，使其IP等级达到IP54。



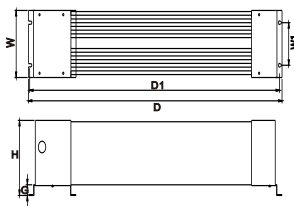
Product Parameters

- Dielectric Strength: AC 3000V 50Hz 5S
- Insulation Resistance: DC 1000V, $\geq 100M\Omega$
- Rated Power: 6KW~30KW

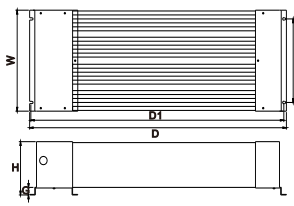
产品参数

- 耐压: AC 3000V 50Hz 5S
- 绝缘电阻: 线-地1000VDC, 绝缘阻值 $\geq 100M\Omega$
- 额定功率: 6KW~30KW

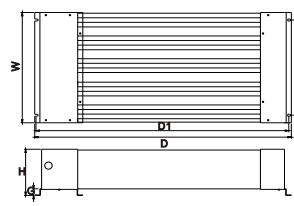
Product Size 产品尺寸图



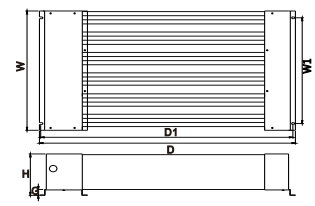
Picture A



Picture B



Picture C



Picture D

Selection Table 选型表

Type 规格	Rated Power 功率 (KW)	Picture NO. 图号	Dimension 外形尺寸 (mm)						Cable 配线 (mm)	Terminal 端子台 螺钉	Resistance Range 阻值范围 (Ω)	Combination 组合
			D	D1	W	W1	G	H				
ARXU (双联体)	6kw	A	522	512	134	80	20	110	Copper Bar	M5	1 Ω -500 Ω	3kw*2
	8kw		622	612	134	80	20	110	Copper Bar	M5	1 Ω -500 Ω	4kw*2
	10kw		722	712	134	80	20	110	Copper Bar	M5	1 Ω -500 Ω	5kw*2
ARXU (三联体)	12kw	B	522	512	284	230	20	110	Copper Bar	M5	1 Ω -500 Ω	3kw*4
ARXU (五联体)	15kw	C	522	512	359	305	20	110	Copper Bar	M5	1 Ω -500 Ω	3kw*5
	20kw		622	612	359	305	20	110	Copper Bar	M5	1 Ω -500 Ω	4kw*5
	25kw		722	712	359	305	20	110	Copper Bar	M5	1 Ω -500 Ω	5kw*5
ARXU (六联体)	30kw	D	722	712	359	305	20	110	Copper Bar	M5	1 Ω -500 Ω	5kw*6

Braking Resistor Box 制动电阻箱

Product Profile 产品简述

The BRU series of products are resistor boxes that are assembled with Wire wound Resistors and are applicable to power consuming circuits of inverter for braking equipment with large rated power and current, testing equipment, elevator and crane.

BRB系列产品是由波纹电阻器组合而成的电阻箱，适用于大功率，大电流的制动设备、试验测试设备、电梯、起重等变频器的能耗制动回路中。



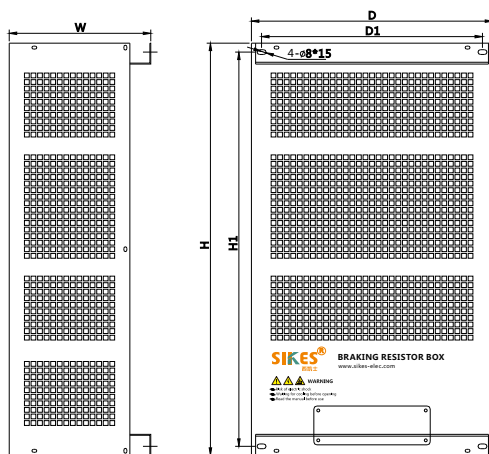
Product Parameters

- Power Range: 2kW~36kW
- Voltage Range: <1000V
- Resistance Range: 1Ω~1KΩ
- Dielectric Strength: AC3KV /5S
- IP Protection: IP20/IP23
- Vibration: 0.5g
- Temperature Coefficient: ≤400ppm/°C
- Element Material: OCr25Al5
- Advantage: relatively bad working environment
- Disadvantages: Working Voltage is not very high, <800V

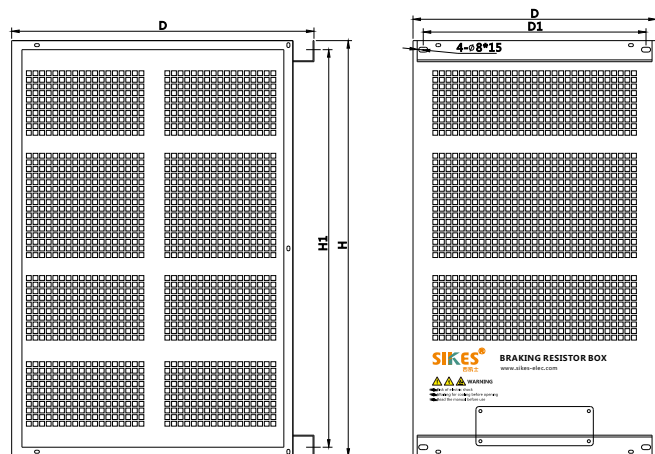
产品参数

- 额定功率范围：2kW~36kW
- 工作电压范围：<1000V
- 额定阻值范围：1Ω~1KΩ
- 耐压范围：AC3KV /5S
- IP等级：IP20 /IP23
- 振动：0.5g
- 温漂范围：≤400ppm/°C
- 载流体材料：OCr25Al5
- 优势：较恶劣工作环境
- 劣势：工作电压不高，<800V

Product Size 产品尺寸图



Picture A



Picture B

■ Selection Table 选型表

Type 规格	Rated Power 功率 (W)	Picture NO. 图号	Dimension 外形尺寸 (mm)						Terminal 端子台 螺钉	Weight 重量 (kg±10%)	Cable 建议配线 (mm)	Resistance Range 阻值范围 (Ω)	Combination 组合
			W ±3mm	D ±3mm	H ±3mm	H1 ±4mm	D1 ±4mm	W1 ±4mm					
BRB	2.0	A	110	665	185	150	635	80	M6	7.00	4	1Ω-1KΩ	2000W*1
	4.0		400	690	215	180	660	370	M6	12.00	6	1Ω-1KΩ	2000W*2
	5.0		400	690	215	180	660	370	M6	13.00	6	1Ω-1KΩ	2500W*2
	6.0		400	690	215	180	660	370	M6	15.00	6	1Ω-1KΩ	2000W*3
	8.0		400	690	235	200	660	370	M6	17.50	10	1Ω-1KΩ	4000W*2
	9.0		400	690	235	200	660	370	M6	18.00	10	1Ω-1KΩ	4500W*2
	10.0		400	690	235	200	660	370	M6	18.50	10	1Ω-1KΩ	5000W*2
	12.0		400	690	235	200	660	370	M6	22.50	10	1Ω-1KΩ	4000W*3
	15.0		400	690	235	200	660	370	M6	23.00	10	1Ω-1KΩ	5000W*3
	18.0	B	400	690	235	200	660	370	M6	24.00	10	1Ω-1KΩ	6000W*3
	20.0		400	690	500	465	660	370	M6	/	16	1Ω-1KΩ	4000W*5
	25.0		400	690	500	465	660	370	M6	/	16	1Ω-1KΩ	5000W*5
	30.0		400	690	500	465	660	370	M6	/	16	1Ω-1KΩ	5000W*6
	36.0		400	690	500	465	660	370	M6	/	16	1Ω-1KΩ	6000W*6

Power Resistor Cabinet 功率电阻柜

Product Profile 产品简述

PRU series is resistor cabinet that is made of Wire wound Resistors and can be applied to the power loss braking circuits for inverters of braking equipment, testing equipment, elevator and crane with large rated power and operating current.

PRU系列产品是由波纹电阻器组合而成的电阻柜，适用于大功率，大电流的制动设备、试验测试设备、电梯、起重等变频器的能耗制动回路中。



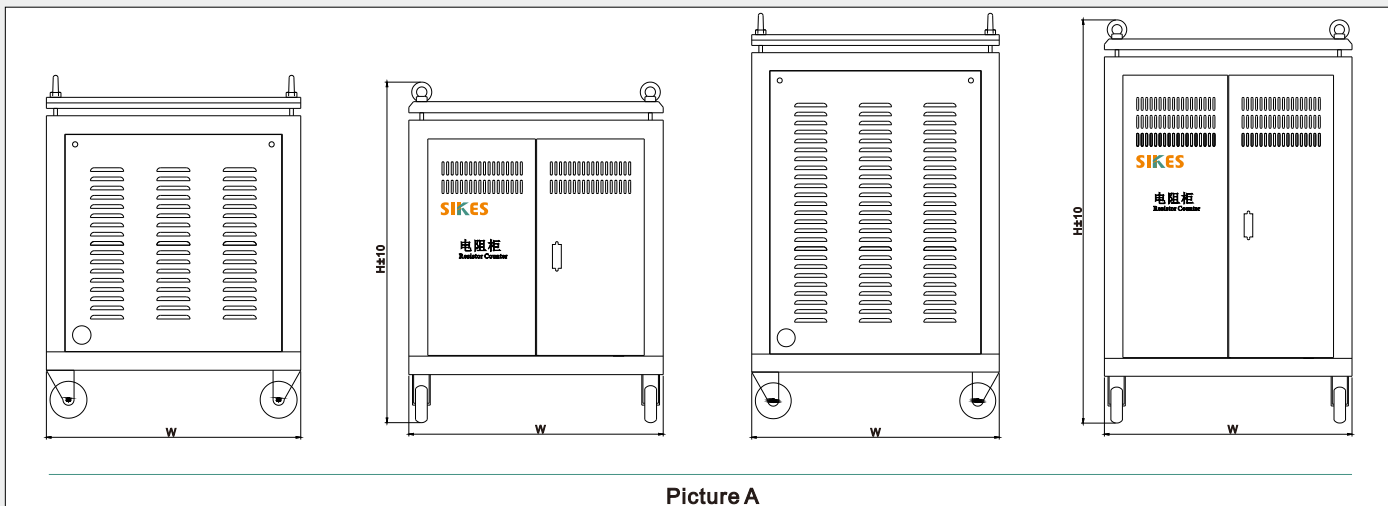
Product Parameterse

- Power Range: 30KW~200KW
- Voltage Range: <1200V
- Resistance Range: 0.5Ω~100Ω
- Dielectric Strength: AC 3KV 50Hz 5s
- IP Protection: IP00/IP23
- Vibration: 0.5g
- Temperature Coefficient: ≤400ppm/°C
- Element Material: OCr25AL5
- Advantage: High-power
- Disadvantage: less Vibration
- For elevator, hoist high-power braking circuit, simulated load test

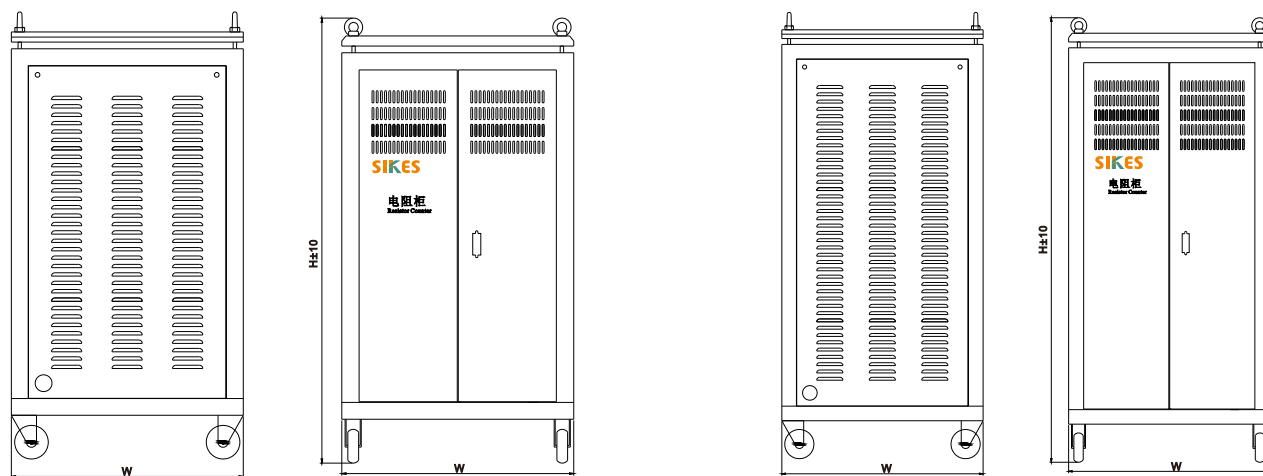
产品参数

- 额定功率范围：30KW~200KW
- 工作电压范围：<1200V
- 额定阻值范围：0.5Ω~100Ω
- 耐压范围：AC 3KV 50Hz 5s
- IP等级：IP00/IP23
- 振动：0.5g
- 温漂范围：≤400ppm/°C
- 载流体材料：OCr25AL5
- 优势：大功率
- 劣势：抗震动性稍差
- 用于电梯、起重大功率制动回路，模拟负荷测试

Product Size 产品尺寸图



Picture A



Picture B

■ Selection Table 选型表

规格 Type	Rated Power 功率 (W)	Dimension 外形尺寸 (mm)						Terminal 端子	Weight 重量 (kg±10%)	Cable 配线 (mm)	Combination 组合	Resistance Range 阻值范围 (Ω)
		W	D	H	H1	D1	W1					
PRU	30	700	500	1185	/	/	/	M6	73.4	16	12*2.5KW	0.4Ω-1KΩ
	40	700	500	1185	/	/	/	M6	86.8	25	16*2.5KW	0.4Ω-1KΩ
	50	700	500	1585	/	/	/	M6	100.2	25	20*2.5KW	0.2Ω-1KΩ
	60	700	500	1585	/	/	/	M6	113.6	35	24*2.5KW	0.2Ω-1KΩ
	70	700	500	1885	/	/	/	M6	127	35	28*2.5KW	0.2Ω-1KΩ
	80	700	500	1885	/	/	/	M6	138.5	50	32*2.5KW	0.1Ω-1KΩ
	90	700	500	2085	/	/	/	M6	155.3	50	36*2.5KW	0.1Ω-1KΩ
	100	700	500	2085	/	/	/	M6	165.3	50	40*2.5KW	0.1Ω-1KΩ
	200	1400	500	2085	/	/	/	M6	330.6	75	2*100KW	0.1Ω-1KΩ

Optional Parts: Radiating Fan, Outdoor Shutters Cover. 供选配件: 散热轴流风机、户外型防雨百叶窗盖板

Stainless Steel Resistor dedicated for Crane, Tower crane, Port crane 起重机、塔机、港吊专用不锈钢电阻

Product Profile 产品简述

Suitable for inverter used in high-power heavy-current equipment, test equipment, elevator, harbour machinery, Crane industry and so on, a carrier consuming the motor's regenerated energy in caloric way.

适用于大功率、大电流的制动设备、试验测试设备、电梯、港口机械、起重等变频器的能耗制动回路中，是将电机的再生能量以热能方式消耗的载体。



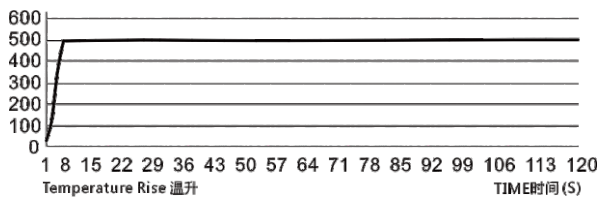
Product Feature

- Small volume with high power
- Low temperature rise, small resistance fluctuation
- Reliable structure, strong vibration resistance

产品特点

- 功率大，体积小
- 温升高，阻值变化率小
- 结构牢靠，抗震性强

Temperature Rise 温升曲线

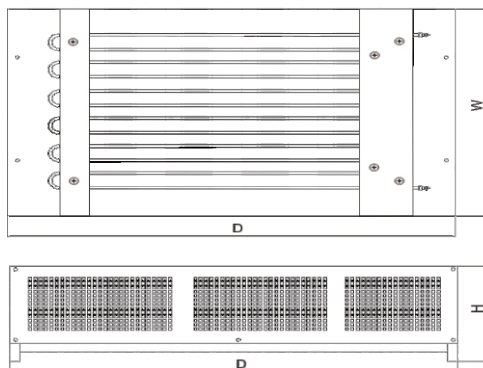


Electrical Specifications 电气规格

Items 项目	Standard 标准值
Power Range 功率范围	1.5KW-20KW
Voltage Range 电压范围	0-1KV
Value Range 阻值范围	1Ω-1KΩ
Dielectric Strength 耐压	2.5KV/1Min 50Hz (可选)
Insulation Resistance 绝缘电阻	100MΩ
IP Class IP等级	IP00-IP23
Rated Temperature Rise 额定温升	550°C
Temperature Drift 温漂	≤400ppm/°C
Vibration 振动	f:5-200Hz a=0.5g X,Y各2H

Can be customized. 可根据客户要求定制。

Product Size 产品尺寸图



Selection Table 选型表

Power Rating 额定功率 (W)	Housing Dimensions 箱体尺寸			Bottom-mount size 底部安装尺寸		Remark 备注
	L(mm)	W(mm)	H(mm)	Mounting holes position 安装孔定位	Hole size 开孔大小	
1000-2500	460	260	100	440*200	7*14	U type hole 开孔为U形孔
3000-5500	460	260	150	440*200	7*14	U type hole 开孔为U形孔
6000-8000	460	260	195	440*200	7*14	U type hole 开孔为U形孔
8500-10000	460	260	240	440*200	7*14	U type hole 开孔为U形孔
11000-12500	460	260	285	440*200	7*14	U type hole 开孔为U形孔
13000-15000	460	260	330	440*200	7*14	U type hole 开孔为U形孔

Can be customized. 可根据客户要求定制。

Power Aluminum Encased Resistors (Injection Type) 功率铝壳电阻器 (注塑型)

Product Profile 产品简述

- Aluminum shell heat dissipation, suitable for hot plate installation.
Small volume, high load power.
Silicone membrane pressure molding, insulation performance is good.

- 铝外壳散热，适用于散热板安装
体积小，功率负荷大
硅铜膜压成型，绝缘性能好

Applicable standards:

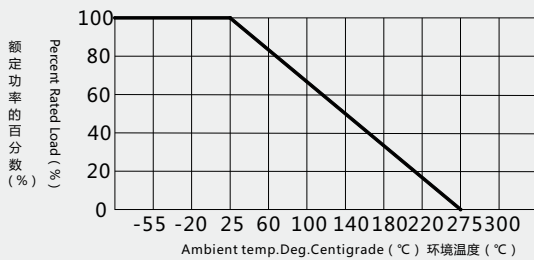
- Electronic equipment fixed resistor in the first part of the total specification (GB/T5729-94)
- Electronic equipment fixed resistor in the fourth part of the total specification (GB/T5732-85)

适用标准：

- 电子设备固定电阻第一部分总规范 (GB/T5729-94)
- 电子设备固定电阻第四部分总规范 (GB/T5732-85)

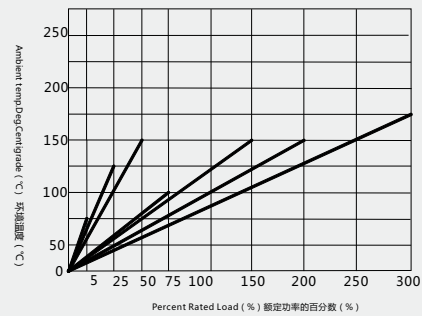


Derating Curve 降额曲线



Suitable for all RX24 with cooling plate resistor
适合所有RX24带散热板的电阻器

Surface Temperature Rise 表面温升

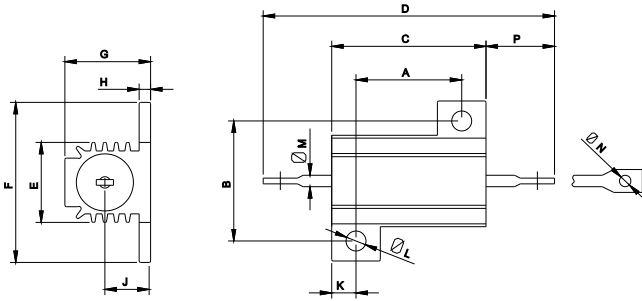


Product Characteristics 产品特性

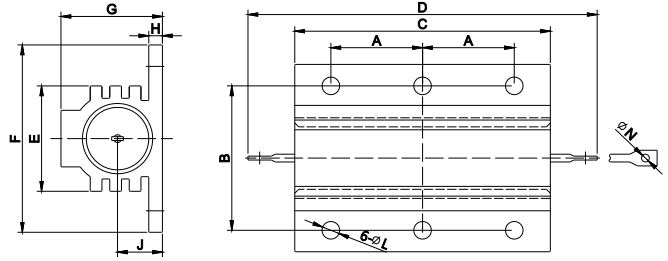
TEST ITEM 试验项目	SPECIFICATIONS 性能要求	TEST METHOD 试验方法
		SJ1330-78
Solderability 可焊性	Solder can free flow and Leading-out terminal getting wet 焊料能自由流动并引线湿润	235±5°C Groove welding 235±5°C 槽焊法
Terminal Tensile Strength 引出端强度	$\Delta R \leq (1\%R + 0.5\Omega)$	40N
Overload 过载	$\Delta R \leq (1\%R + 0.5\Omega)$	5P, 5s
Resistance With Temperature 温度变化	$\Delta R \leq (1\%R + 0.5\Omega)$	-55°C ~ +155°C five times circulation -55°C ~ +155°C 5次循环
Sold Heat 耐焊接热	$\Delta R \leq (1\%R + 0.5\Omega)$	350±10°C, 3.5±5S
Shock 冲击	$\Delta R \leq (1\%R + 0.5\Omega)$	Acceleration 490m/s ² , 11ms, 18 times 加速度490m/s ² , 11ms, 18次
Vibratious 振动	$\Delta R \leq (1\%R + 0.5\Omega)$	Frequency 10-50HZ, Acceleration 980m/s ² 频率10-50HZ, 加速度980m/s ²
Surface Temperature Rise 表面升温	$\leq 275^\circ\text{C}$	VR
Dampheat Steady State 恒定湿热	$\Delta R \leq (5\%R + 0.5\Omega)$	Temperature 40±2°C, humidity 93+2/-3%, 21 days 温度40±2°C, 湿度93+2/-3%, 21天
Load Life 长期寿命	$\Delta R \leq (5\%R + 0.5\Omega)$	Working under indoor temperature with rated power for 1000 hours 室温施加额定功率负荷1000h

Power Aluminum Encased Resistors (Injection Type) 功率铝壳电阻器 (注塑型)

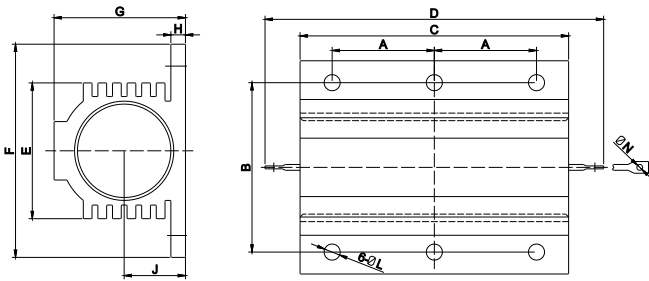
Product Size 产品尺寸图



Picture A



Picture B



Picture C

Selection Table 选型表

Type 规格	Rated Power 功率 (W)	Picture NO. 图号	Resistance Range 阻值范围 (Ω)	Technical Specifications 技术说明			Dimension 外形尺寸 (±5mm)													
				TCR(10/°C) 温度系数	Resistance error 阻值误差 (%)	Withstand voltage 耐压 (V)	A	B	C	D	E	F	G	H	J	K	L	M	N	P
							±1.0	±1.0	±1.0	±2.0	±1.0	±1.0	±1.0	±0.8	±1.0	±0.8	±0.5	±0.5	±0.2	±0.8
Rx24	5W	A	0.01~1K	±50	±1(F)	1000	11.4	13	16	29	8.5	16	8	1.5	4.4	2.1	2.2	1.5	1.3	6.5
RX24	10W		0.01~1.5K	±50	±1(F)	1000	14	16	20	35	11	21	10	2	5	2.8	2.5	2	2.2	7.9
RX24	25W		0.01~10K	±50	±1(F)	1000	18.3	20	27	49	14	27	13	2	7	4.3	3.5	2	2.2	11.1
RX24	30W		0.01~27K	±50	±1(F)	2000	25	22	34	55	16	29	16	2	7.3	4.5	3.5	2	2.2	10.5
RX24	50W		0.01~33K	±50	±1(F)	2000	40	22	50	71	16	29	16	2	7.3	5	3.5	2	2.2	10.3
RX24	75W	B	0.01~39K	±100	±2(G)	2000	23.5	37	66	87	27	48	26	3.5	12	/	4.5	/	3	/
RX24	100W		0.01~51K	±100	±2(G)	2000	35	37	98	119	27	48	26	3.5	12	/	4.5	/	3	/
RX24	150W		0.01~56K	±100	±2(G)	2500	52	37	130	151	27	48	26	3.5	12	/	4.5	/	3	/
RX24	200W	C	0.01~58K	±200	±5(J)	2500	35	58	92	132	47	73	45	5	21	/	5.5	/	M6	/
RX24	250W		0.01~75K	±200	±5(J)	2500	45	58	112	152	47	73	45	5	21	/	5.5	/	M6	/
RX24	300W		0.01~75K	±200	±5(J)	2500	51	58	130	170	47	73	45	5	21	/	5.5	/	M6	/
RX24	500W		0.01~82K	±200	±5(J)	2500	87	58	204	244	47	73	45	5	21	/	5.5	/	M6	/

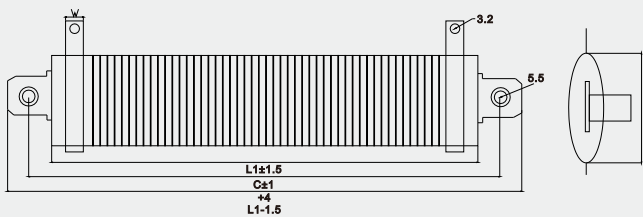
Oval wirewound resistor flame-restarded

功率型阻燃扁式被漆线绕电阻器

Product Profile 产品简述

Low resistance, High precision, Full molded structure.
低阻值、高精度、完全模压结构。

Product Size 产品尺寸图



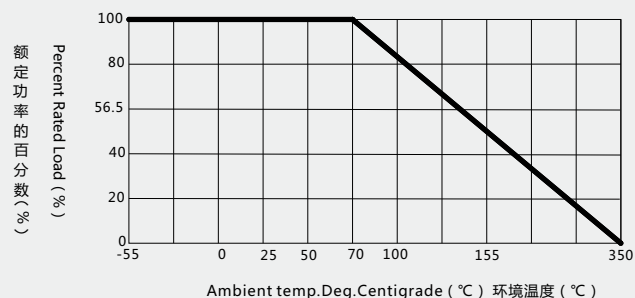
Picture A



Selection Table 选型表

Type 规格	Rated Power 功率 (W)	Picture NO. 图号	Resistance Range 阻值范围 (Ω)	Weight 重量 (g)	OPERATING TEMP.RANGE 使用温度范围	Resistance error 阻值误差 (%)	Dimension 外形尺寸 (±5mm)			
							L1	C	L	W
RxB23	30W	A	0R1~9K1	/	-55°C~200°C	±5	64	51	32	5
RxB23	40W		0R1~16K0	/			83	70	51	5
RxB23	55W		0R1~36K0	/			120	108	89	5
RxB23	70W		0R1~51K0	/			152	140	120	6
RxB23	95W		0R1~75K0	/			184	171	152	6

Derating Curve 降额曲线



Product Characteristics 产品特性

TEST ITEM 试验项目	TESTING METHOD 试验方法	SPECIFICATIONS 性能要求
Surface temperature rise 表面温升	JIS-5202 5-4 After resistor working under rated voltage for 30 minutes ,then measure the temperature. JIS-5202 5-4 电阻器施加额定功耗电压, 30分钟后测量电阻体中部的温度	Surface temperature < 350°C 电阻器表面温度小于350°C
Withstand voltage 耐电压	JIS-C-5202 5-7 Using package foil method under 1000vac for 1 minute. JIS-C-5202 5-7 采用包箔法, 施加交流1000V的电压一分钟。	No mechanism damage or arcing breakage 无显著的机械损伤、无击穿和飞弧现象
Overload in short time 短时间过负荷	JIS-C-5202 5-5 Resistor working under 10 times the rated voltage for 5 seconds. JIS-C-5202 5-5 电阻器施加10倍额定功率的电压5秒。	No mechanism damage ΔR≤±(2%R+0.05Ω) 无机械损伤, ΔR≤±(2%R+0.05Ω)
Leading-out terminal strength 引出端强度	JIS-C-5202 6-1 Along the soldering terminal's direction, applying 4.5GF for 30 econds. JIS-C-5202 6-1 沿着焊片引出方向施加4.5克力30秒。	No mechanism damage 无显著的机械损伤
Solderability 可焊性	JIS-C-5202 6-5 Temperature 270°C±10°C, immersion depth 2.0mm~2.5mm for 5±0.5 seconds. JIS-C-5202 6-5 温度270°C±10°C, 浸入深度2.0mm~2.5mm, 浸入时间5±0.5s	Solder wetting and can free flow 焊料湿润引出端并能自由流动
Vibration 振动	JIS-C-5202 6-3 Changing frequency 10HZ~55HZ~10HZ within one minute ,amplitude 1.5mm , three perpendicular direction, each for 2 hours JIS-C-5202 6-3 1分钟内频率从10HZ~55HZ~10HZ, 振幅1.5mm, 三个相互垂直的方向各2个小时。	No mechanism damage 无显著的机械损伤
Heat resistance 耐热性	JIS-C-5202 7-3 Putting the resistor into 350°C±5°C high temperature test chamber for 2 hours. JIS-C-5202 7-3 电阻器放置在350°C±5°C的高温试验箱内2小时。	No breakage for resistor's mark and appearance ΔR≤±(2%R+0.05Ω) 电阻器的标志和外观无损伤 ΔR≤±(2%R+0.05Ω)
Thermal shock 热冲击	JIS-C-5202 7-3 Resistor working under rated voltage for 30 minutes, then within next 8~12 seconds put the resistor into -55°C cryogenic box for 15 minutes. JIS-C-5202 7-3 电阻器施加额定功耗的电压30分钟, 然后在8~12秒内将电阻器放置在-55°C的低温箱内15分钟后取出。	No mechanism damage ΔR≤±(2%R+0.05Ω) 无显著的机械损伤 ΔR≤±(2%R+0.05Ω)
Moisture-proof 耐湿负荷	JIS-C-5202 7-9 Put the resistor into constant 40°C±2°C temperature, 90%~95% humidity chamber, applying 0.1 times the rated power, working 1.5 hours each time then power off for 0.5 hours, 501 hours total. JIS-C-5202 7-9 电阻器放置在40°C±2°C, 湿度90%~95%的恒温恒湿箱内, 施加0.1倍额定功率的负荷, 1.5h通电, 0.5h断电, 试验持续时间501小时。	No breakage for resistor's mark and appearance. 电阻器的标志和外观无损伤 ΔR≤±(2%R+0.05Ω) 绝缘电阻大于10Ω
Durability 耐久性	JIS-C-5202 7-10 Under indoor temperature and rated power, working 1.5 hours each time then power off for 0.5 hours, 500 hours total. JIS-C-5202 7-10 在室温下给电阻器施加额定功率的负荷, 1.5h通电, 0.5h断电, 试验持续时间500小时。	No breakage for resistor's mark and appearance ΔR≤±(2%R+0.05Ω) 电阻器的标志和外观无损伤 ΔR≤±(2%R+0.05Ω)
Flame retardancy 阻燃性	JIS-C-5202 7-3 Resistor working under 1~6 times the rated power. JIS-C-5202 7-3 电阻器施加1~6倍额定功耗的负荷。	No flame or electric arc 无明火和电弧现象